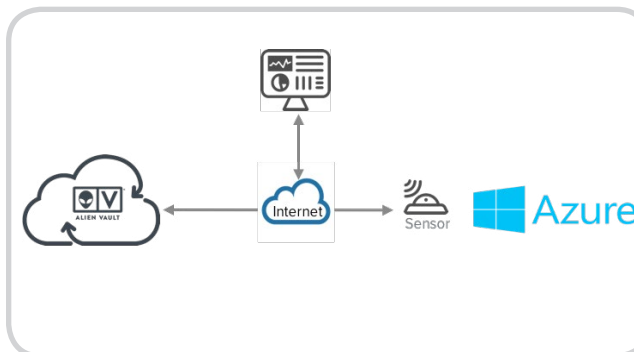




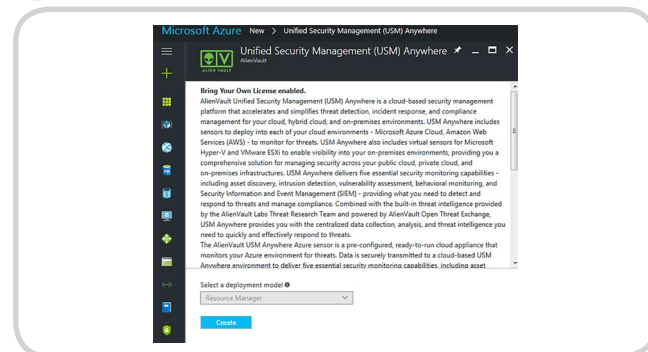
Pre-Installation Checklist

- An Azure account with privileges
- Administrative credentials for any Linux (SSH) and Windows (WinRM) VMs on which you intend to run authenticated scans for vulnerabilities, software packages, and running services
- Administrative access to Active Directory within Azure
- A virtual network inside the resource group
- A subnet inside the virtual network
- A storage account

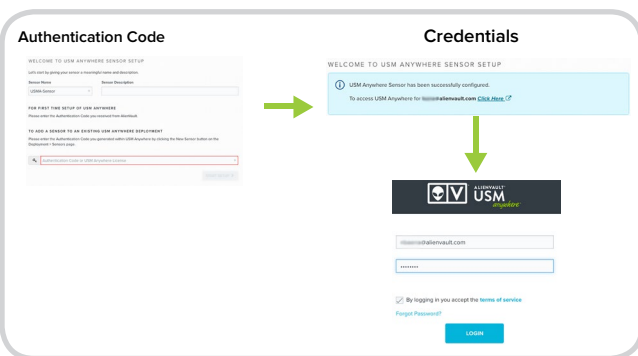
USM Anywhere Deployment



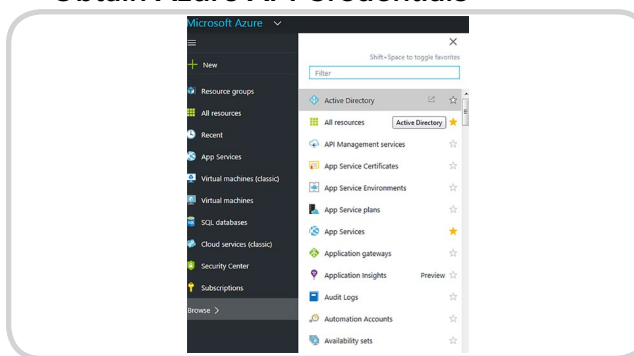
1 Install Sensor



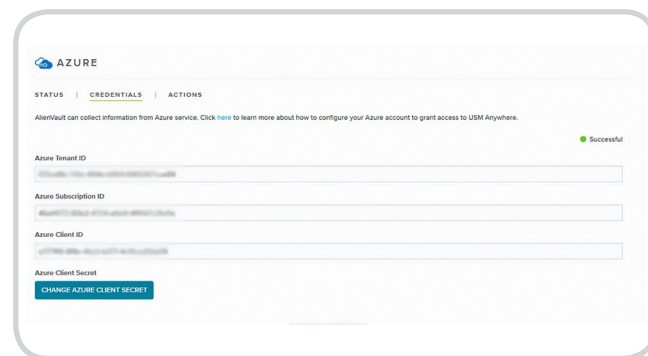
2 Connect Sensor to USM Anywhere



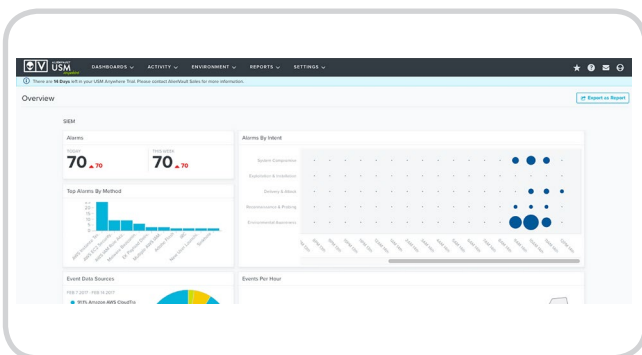
3 Create Application in Active Directory & Obtain Azure API Credentials



4 Launch the Setup Wizard



5 Start using USM Anywhere



For further information, please check out the [USM Anywhere Sensor deployment](#) instructions on Microsoft Azure

Need Help?

You can contact [AlienVault Support](#).